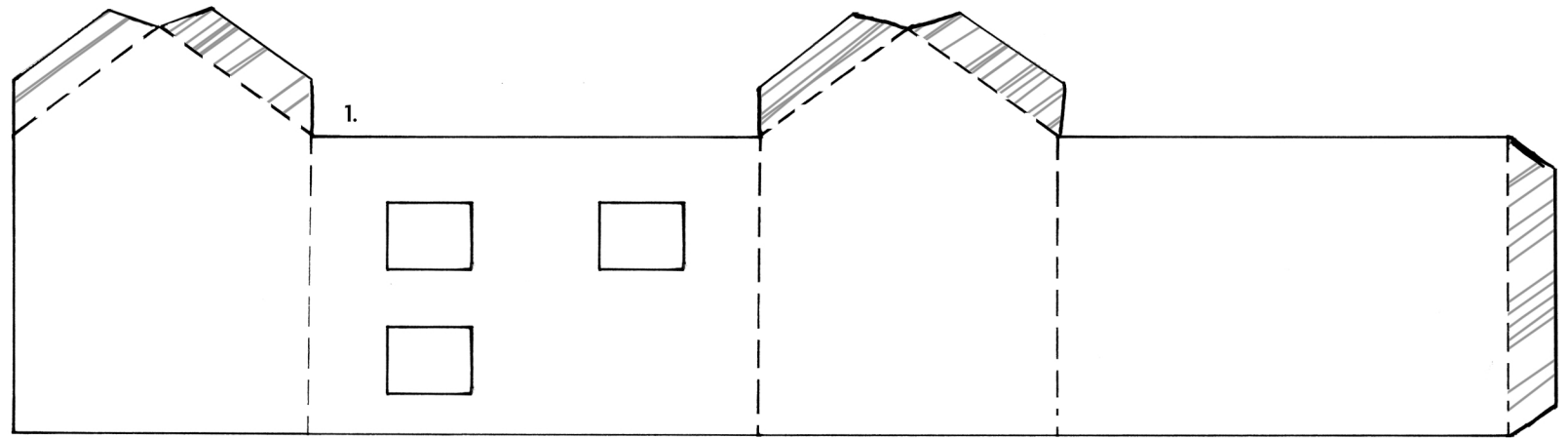


PRINT A HOUSE

by Emma Russell
helloemma.co.uk
@EmmaRusset



TOP TIPS

Heavy paper or thin card will give you a sturdy house which will really last. If using thin paper your smoke might go a bit saggy!

Fold the pieces so the ink lines are on the inside and don't show when you've finished.

It's easier to fold neatly if you score the FOLD lines first.

Section 7, the paper decorations, is optional. They're a bit fiddly. You may prefer to decorate your house by drawing or invent your own doors, windows and smoke.

WOOHOO! LET'S GET THE HECK ON WITH IT!

1. WALLS it's up to you whether you cut out the windows but if you are going to, then do it before you fold the house. Fold the tabs inwards, sticking the vertical tab on the inside of the walls. Fold the tabs on the triangular tops of the walls inwards.

2. ROOF Fold along line. Glue the tabs on triangular tops of the walls and lay the roof on top of the tabs.

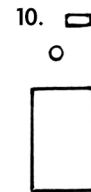
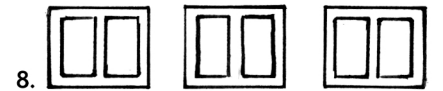
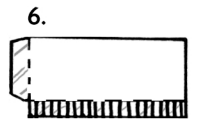
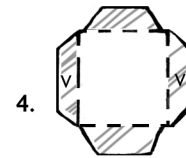
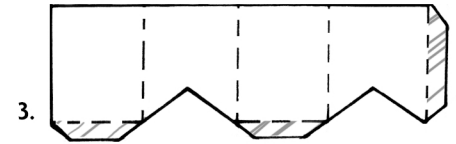
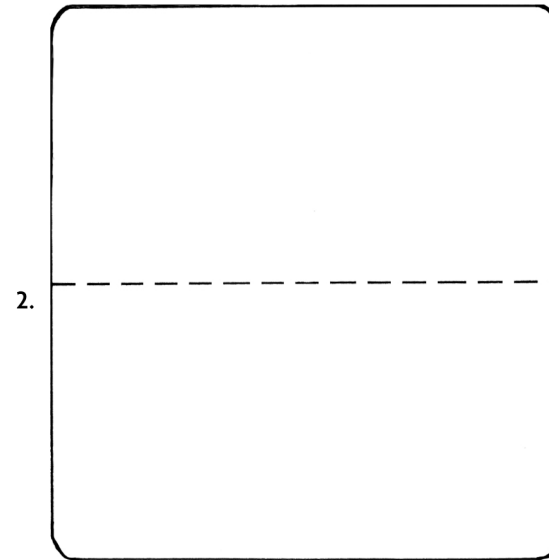
3. CHIMNEY STACK Score and fold lines. Glue end tab to make rectangular tube.

4. CHIMNEY STACK CAP Fold tabs and slide into the tube, glue in place from underneath. The cap is not square. The sides marked v align with the indented sides of the chimney stack.

5. Glue the tabs on the bottom of the chimney stack and sit on top of the roof ridge.

6. CHIMNEY POT Score, fold and unfold the bottom tab then cut lots of little slits up to it like a fringe. Roll the chimney pot up and glue into a round tube, then fold the fringe inside so it's flat at the bottom. Glue the underside of the fringe and stick the chimney pot on top of the cap inside the chimney stack.

7. OPTIONAL DECORATIONS Cut out window frames (8) and stick on (over the



cut outs if you made them). Fold porch (9) and stick to the front of the house. Stick letterbox and doorknob on the door (10), then the door inside the porch. Glue the tab on the smoke (11) and stick inside the chimney pot.

AND NEXT?

Make yourself a whole village! Try using coloured paper. What other decoration could you add? Climbers around the door, gardens, window boxes, a porthole in the gable? Invent your own buildings. Share pictures with me on insta or twitter @EmmaRusset I'd love to see.

